

**BALDOR® • RELIANCE** 

**Product Information Packet**

**CFSWDM41906T-E**

**20HP,3540RPM,3PH,60HZ,256TC,TEFC,F1**

Part Detail							
Revision:	K	Status:	PRD/A	Change #:		Proprietary:	No
Type:	AC	Elec. Spec:	39WGY419	CD Diagram:	CD0005	Mfg Plant:	
Mech. Spec:		Layout:	39LYE646	Poles:	02	Created Date:	12-18-2019
Base:		Eff. Date:	07-02-2020	Leads:	9#10		

Specs			
Catalog Number:	CFSWDM41906T-E	Inverter Code:	Inverter Duty
Enclosure:	TEFC	KVA Code:	K
Frame:	256TC	Lifting Lugs:	Standard Lifting Lugs
Frame Material:	Stainless Steel	Locked Bearing Indicator:	Locked Bearing
Output @ Frequency:	20.000 HP @ 60 HZ	Motor Lead Quantity/Wire Size:	9 @ 10 AWG
Synchronous Speed @ Frequency:	3600 RPM @ 60 HZ	Motor Lead Exit:	Ko Box
Voltage @ Frequency:	230.0 V @ 60 HZ	Motor Lead Termination:	Flying Leads
	460.0 V @ 60 HZ	Motor Type:	3960M
XP Class and Group:	None	Mounting Arrangement:	F1
XP Division:	Not Applicable	Power Factor:	90
Agency Approvals:	UR	Product Family:	WD All SS Encapsulated
	CSA	Pulley End Bearing Type:	Sealed Bearing
Auxillary Box:	No Auxillary Box	Pulley Face Code:	C-Face
Auxillary Box Lead Termination:	None	Pulley Shaft Indicator:	Standard
Base Indicator:	Rigid	Rodent Screen:	None
Bearing Grease Type:	POLYREX SHC102 EM (-20F +356F)	RoHS Status:	ROHS COMPLIANT
Blower:	None	Shaft Extension Location:	Pulley End
Current @ Voltage:	23.000 A @ 460.0 V	Shaft Ground Indicator:	No Shaft Grounding

	46.000 A @ 230.0 V	<b>Shaft Rotation:</b>	Reversible
<b>Design Code:</b>	A	<b>Shaft Slinger Indicator:</b>	No Slinger
<b>Drip Cover:</b>	No Drip Cover	<b>Speed Code:</b>	Single Speed
<b>Duty Rating:</b>	CONT	<b>Motor Standards:</b>	NEMA
<b>Electrically Isolated Bearing:</b>	Not Electrically Isolated	<b>Starting Method:</b>	Direct on line
<b>Feedback Device:</b>	NO FEEDBACK	<b>Thermal Device - Bearing:</b>	None
<b>Front Face Code:</b>	Standard	<b>Thermal Device - Winding:</b>	None
<b>Front Shaft Indicator:</b>	None	<b>Vibration Sensor Indicator:</b>	No Vibration Sensor
<b>Heater Indicator:</b>	No Heater	<b>Winding Thermal 1:</b>	None
<b>Insulation Class:</b>	H	<b>Winding Thermal 2:</b>	None

<b>Nameplate NP1953L01</b>											
<b>CAT.NO.</b>	CFSWDM41906T-E										
<b>SPEC.</b>	39-0000-0232										
<b>HP</b>	20										
<b>VOLTS</b>	230/460										
<b>AMPS</b>	46/23										
<b>R.P.M.</b>	3540										
<b>FRAME</b>	256TC				<b>HZ</b>	60				<b>PH</b>	3
<b>SER.F.</b>	1.00			<b>CODE</b>	K	<b>DES.</b>	A			<b>CLASS</b>	H
<b>NEMA NOM. EFF.</b>	91				<b>P.F.</b>	90					
<b>RATING</b>	40C AMB-CONT										
<b>CC</b>	010A				<b>USABLE AT 208V</b>						
<b>DE</b>	6309				<b>ODE</b>	6309					
<b>ENCL</b>	TEFC		<b>SN</b>								
	2:1 CT/10:1 VT										

Parts List		
Part Number	Description	Quantity
SA377347	SA 39-0000-0232	1.000 EA
RA367264	RA 39-0000-0232	1.000 EA
WD5603A01	KIT, CLOSED-END LEAD SPLICE (18-14GA)	1.000 EA
MN416A01	TAG-INSTAL-MAINT no wire (1200/bx) 3/19	1.000 EA
39FH4004A01	304 SS FANCOVER SPUN W/SLOTS & MTG(POLIS	1.000 EA
10XN2520FS08	HEX HD CAP SCREW 1/4-20 X 1/2 SS FOOD SA	3.000 EA
HW1001S25	WASHER, 1/4 SPLT LK, STAINLESS STEEL	3.000 EA
37FN3002C02	EXFN, PLASTIC, 6.00 OD, 1.503 ID	1.000 EA
HW2502F08	KEY, 5/16 SQ X .875 303 SS	1.000 EA
51XB1214S20	12-14X1.25 HXWSSLD SERTYB, SS	1.000 EA
MJ1000A107	GREASE, MOBIL SHC POLYREX 102 EM	0.080 LB
HA3105FS14	THRUBOLT, 3/8-16 X 17.250 SS FOOD SAFE	4.000 EA
RM1070A78	O-RING, -012 VITON/FKM .070CS X .364ID	4.000 EA
39EP1904A02	FREP ENCL 309 BRG (STAINLESS) POLISHED	1.000 EA
HW4600F81	45 X 68 X 10 LIP SEAL, GRAPHITE INFUSED	1.000 EA
HW4600F80	45 X 62 X 4.5 AFS SEAL, GRAPHITE INFUSED	1.000 EA
HW5100A11	W3917-042 WVY WSHR (WB)	1.000 EA
HW4500S33	1/8 NPT STAINLESS #304 SS PLUG	3.000 EA
HA4002A03	#304 S.S. DRAIN FITTING, .125 NPT (.44 H	1.000 EA
HA4002A03	#304 S.S. DRAIN FITTING, .125 NPT (.44 H	1.000 EA
RM1070A80	O-RING, VITON/FKM .070CS X 10.800ID	1.000 EA
39EP1905A01	PUEP ENCL 309 BRG (STAINLESS) POLISHED	1.000 EA
HW4600F80	45 X 62 X 4.5 AFS SEAL, GRAPHITE INFUSED	1.000 EA
39CB1001A01	39 MID-SECTION, - 3PC. BOX W/5.75-12 THD	1.000 EA

<b>Parts List (continued)</b>		
<b>Part Number</b>	<b>Description</b>	<b>Quantity</b>
HW4600F81	45 X 68 X 10 LIP SEAL, GRAPHITE INFUSED	1.000 EA
HW4500S33	1/8 NPT STAINLESS #304 SS PLUG	3.000 EA
RM1070A80	O-RING, VITON/FKM .070CS X 10.800ID	1.000 EA
10XN2520S08	SCREW, 1/4-20 X 1/2 HHCS SS	4.000 EA
RM1070A79	O-RING, -051 VITON/FKM .070CS X 5.489ID	1.000 EA
WD1000B16	T&B CX70TN OR L70P TERMINAL LUG	1.000 EA
59XW2520G07	.25-20X.44,HEX SER WSHR,TAPTITE 2,GREEN	1.000 EA
39CB1500A01	39 LID, 3 PC. BOX STAINLESS (POLISHED)	1.000 EA
RM1070A79	O-RING, -051 VITON/FKM .070CS X 5.489ID	1.000 EA
40PA1000	PACKAGING GROUP	1.000 EA
HW2502G25	#303 SS,SQ KEY 3/8 X 2.880	1.000 EA
MJ5004A93	FOOD GRADE (H1 RATED) ANTISEIZE THRD COM	0.005 EA
MJ5000A09	EFI KIT #1578 (400 ML CARTRIDGE OF EFI	0.031 EA
HA5027A07	85XU1208S08 FACE DRAIN PINS BAGGED	1.000 EA
FE-0000013	ZRTG FE ASSEMBLY	1.000 EA
PE-0000003	ZRTG PE ASSEMBLY	1.000 EA

**AC Induction Motor Performance Data**

Record # 80272 - Typical performance - not guaranteed values

<b>Winding:</b> 39WGY419-R001	<b>Type:</b> 3960M	<b>Enclosure:</b> TEFC
-------------------------------	--------------------	------------------------

Nameplate Data				460 V, 60 Hz: High Voltage Connection	
Rated Output (HP)	20			Full Load Torque	29.8 LB-FT
Volts	230/460			Start Configuration	direct on line
Full Load Amps	46/23			Breakdown Torque	161 LB-FT
R.P.M.	3540			Pull-up Torque	64.7 LB-FT
Hz	60	Phase	3	Locked-rotor Torque	78.2 LB-FT
NEMA Design Code	A	KVA Code	K	Starting Current	221 A
Service Factor (S.F.)	1			No-load Current	6.9 A
NEMA Nom. Eff.	91	Power Factor	90	Line-line Res. @ 25°C	0.30935 Ω
Rating - Duty	40C AMB-CONT			Temp. Rise @ Rated Load	85°C
				Locked-rotor Power Factor	26.5

Load Characteristics 460 V, 60 Hz, 20 HP

% of Rated Load	25	50	75	100	125	150
Power Factor	61	80	87	90	92	92
Efficiency	86.5	91.3	92.5	92.6	92.2	91.5
Speed	3585.8	3572.3	3557.6	3541.8	3525.6	3508.1
Line amperes	8.97	12.8	17.5	22.5	27.8	33.4

Performance Graph at 460V, 60Hz, 20.0HP Typical performance - Not guaranteed values

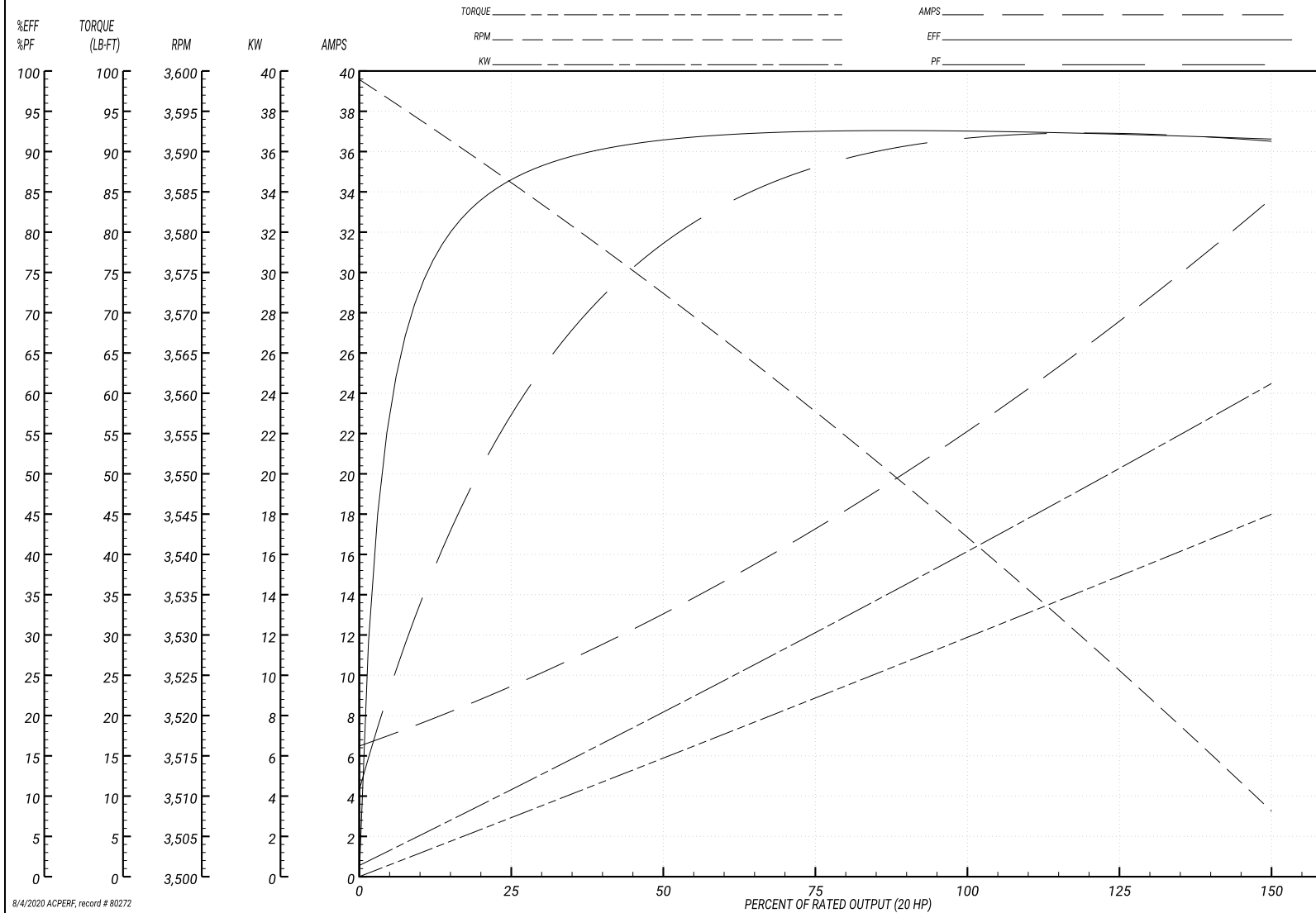
ABB Motors and Mechanical Inc.

WINDING # 39WGY419

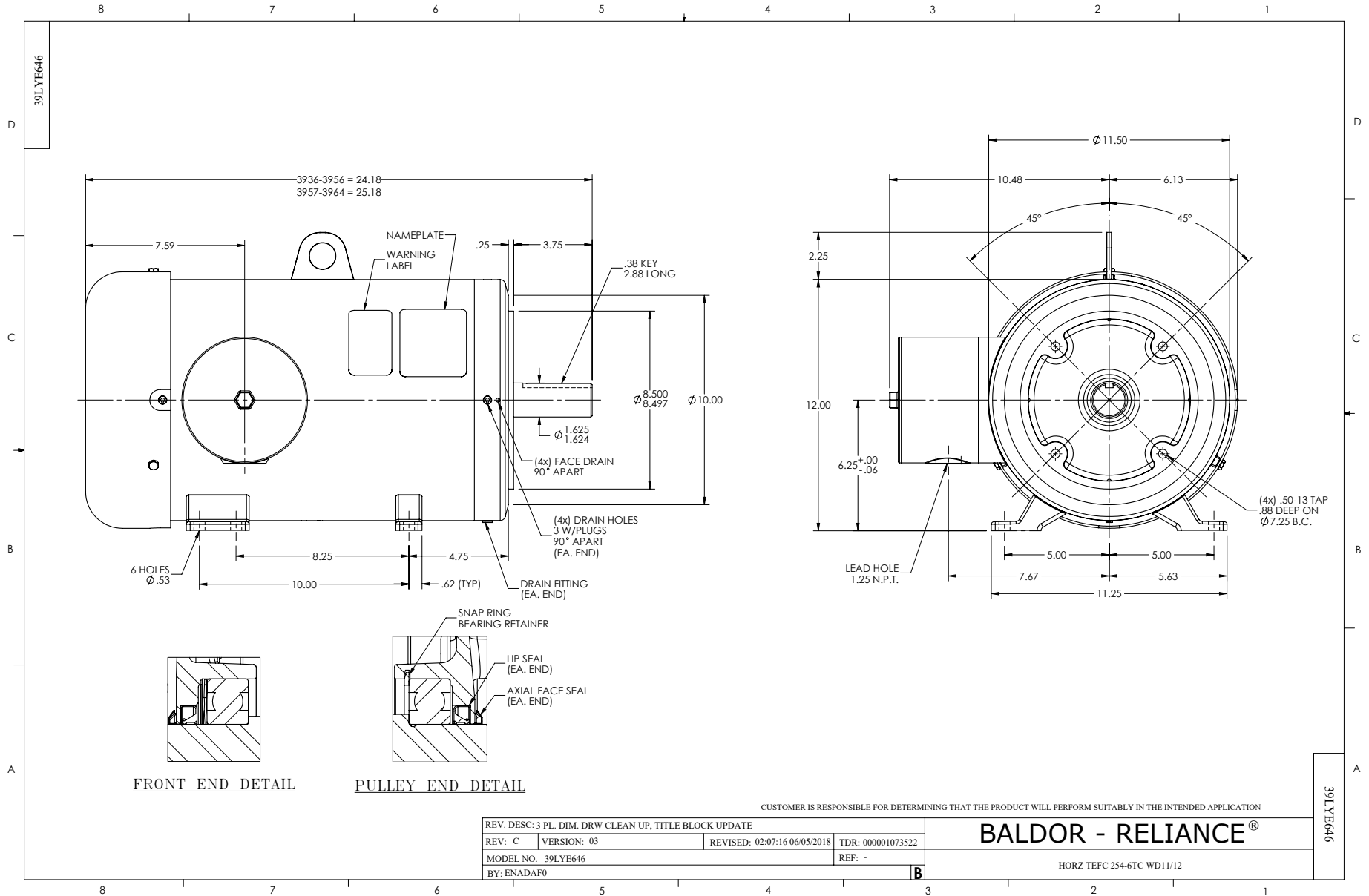
Typical performance - not guaranteed values.

20 HP 3 PH 60 HZ 3540 RPM 460 V 3960M

TORQUES(LB-FT): PO=161 PU=64.7 LR=78.2 LRA=221



8/4/2020 ACPERF, record # 80272



CD0005

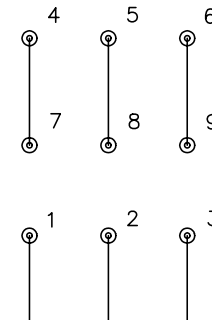


LOW VOLTAGE  
(2Y)



LINE

HIGH VOLTAGE  
(1Y)



LINE

NOTES:

1. INTERCHANGE ANY TWO LINE LEADS TO REVERSE ROTATION.
2. OPTIONAL THERMOSTATS ARE PROVIDED WHEN SPECIFIED.
3. ACTUAL NUMBER OF INTERNAL PARALLEL CIRCUITS MAY BE A MULTIPLE OF THOSE SHOWN ABOVE.
4. LEAD COLORS ARE OPTIONAL. LEADS MUST ALWAYS BE NUMBERED AS SHOWN.

REV. DESC: REVISE TO SHOW OPTIONAL COLORS			
REV. LTR: E	BY: JLP	REVISED: 01/19/99 10:15	TDR: 0171435
90000		FILE: AAA00005140	MDL: -
		MTL: -	

**BALDOR ELECTRIC Co.**

3PH, DV, 9 LEADS

CD0005

Marketing maintained PDF of MN416:

<http://www.baldor.com/support/Literature/Load.ashx/MN416?ManNumber=MN416>